

Primer's VISUAL GUIDE TO UNDERSTANDING COMMON SUIT FEATURES AND OUR PICKS FOR YOUR NEXT

BY ANDREW SNAVELY

with expertise from PRIMER'S GRANT HARRIS and MFA'S NICK TAVERNA

THIS POST MADE POSSIBLE BY

R 7 REGENT LANE

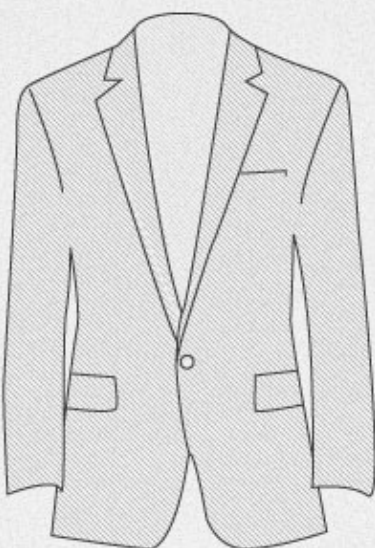
www.7RegentLane.com

FIT IN, STAND OUT.

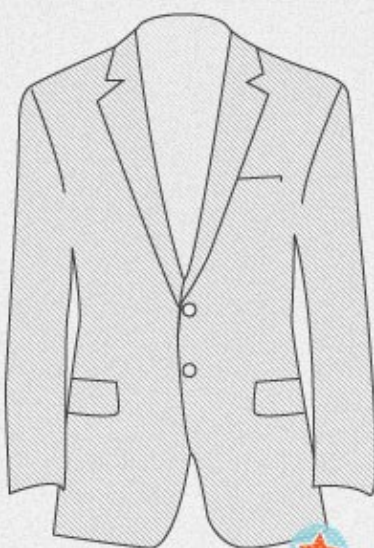


With many of these options there is no right or wrong choice. I've marked a few that are better for a guy's first suit or two based on versatility and style.

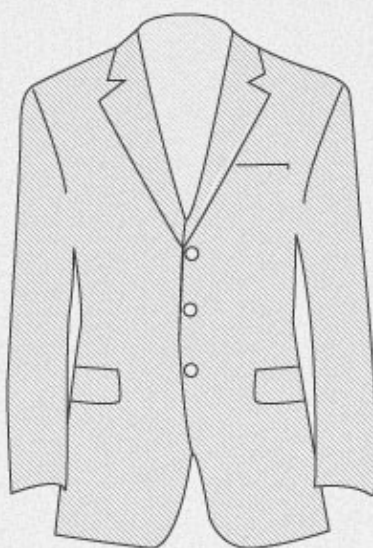
Buttons



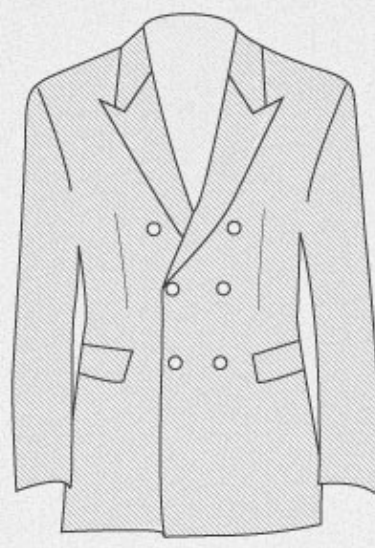
1 BUTTON



2 BUTTON



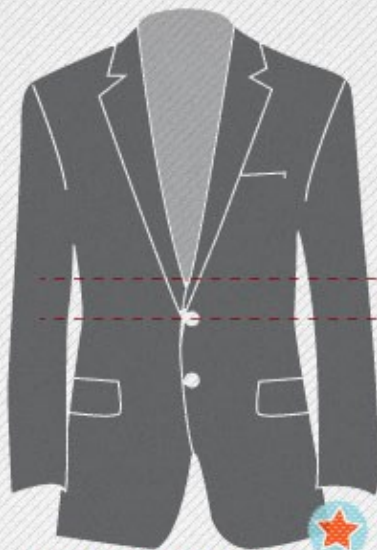
3 BUTTON



DOUBLE BREASTED
(6X2)

Not all 2 button jackets are the same.

One of the benefits of a 2 button jacket is the flattering deep 'v' the longer lapels create. However, some 2 button jackets, especially at more budget friendly retailers, have a higher button stance which results in a similar look as a 3 button.

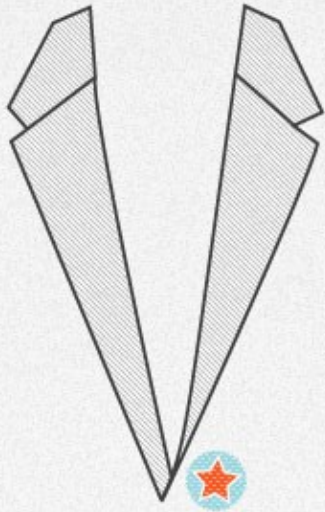


LOW BUTTON STANCE

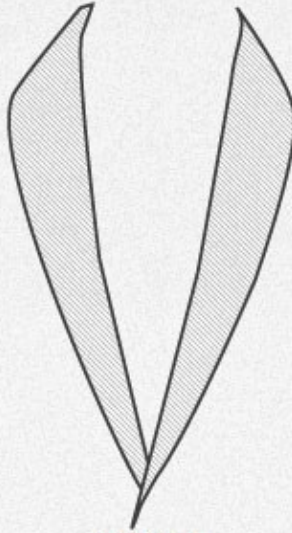


HIGH BUTTON STANCE

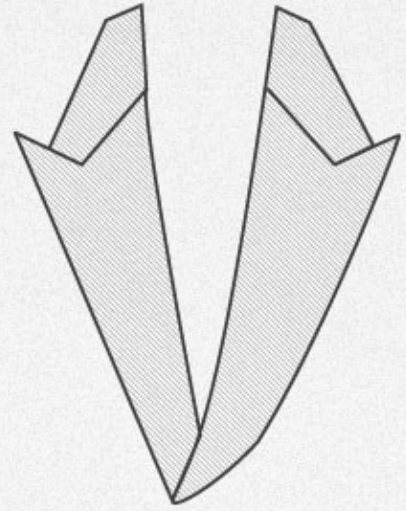
Lapels



NOTCH



SHAWL



PEAK



The width of your tie should relate to the width of your lapel.

Keep your tie width preferences in mind when buying a new suit. Even if you get a great deal, a suit with wide lapels when you're a narrow tie guy won't work.

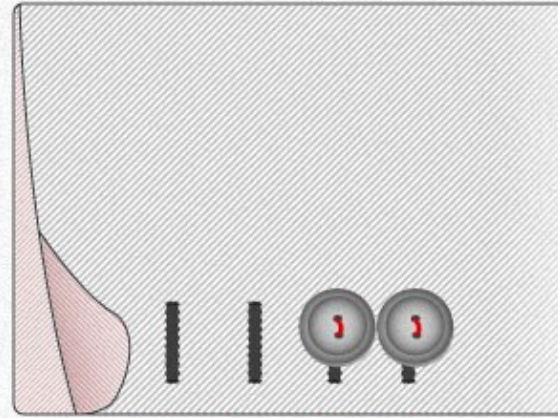
Sleeves

Decorative vs Functional Buttons

While a trait of finer suits, functional buttons -- also known as Surgeon's Cuffs, make tailoring the sleeve expensive because it must be altered at the shoulder. Stick to fixed buttons unless your suit is being made for you or the sleeves fit off the rack.

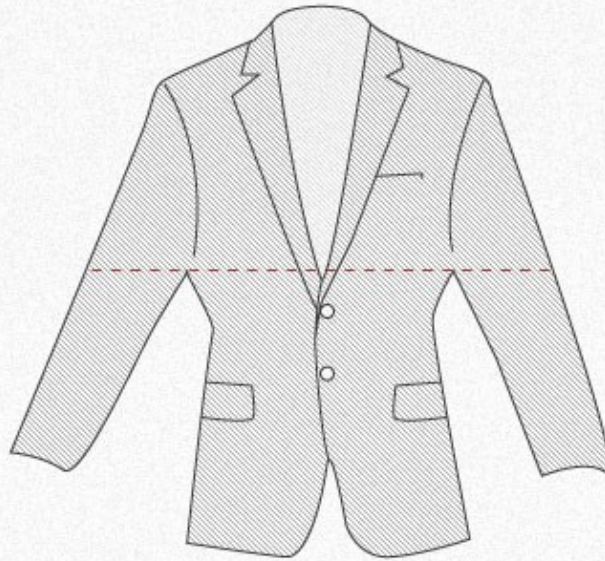


FIXED BUTTONS 

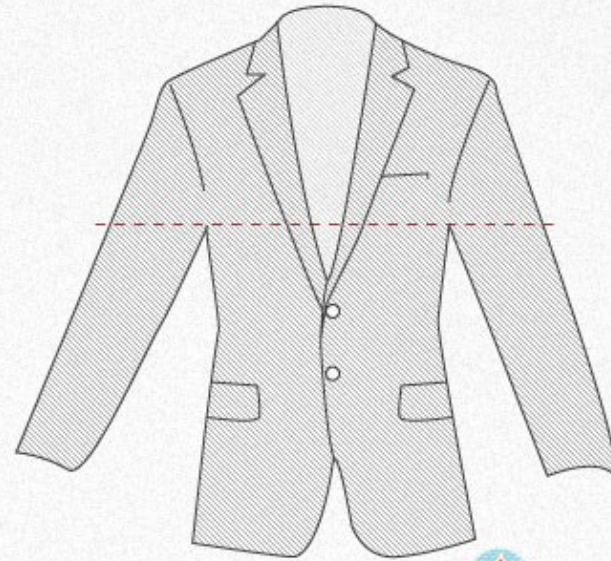


SURGEON'S CUFFS

The lower the armhole the more the jacket will move when you swing your arm to shake someone's hand. For a more natural movement and modern look, opt for higher armholes.

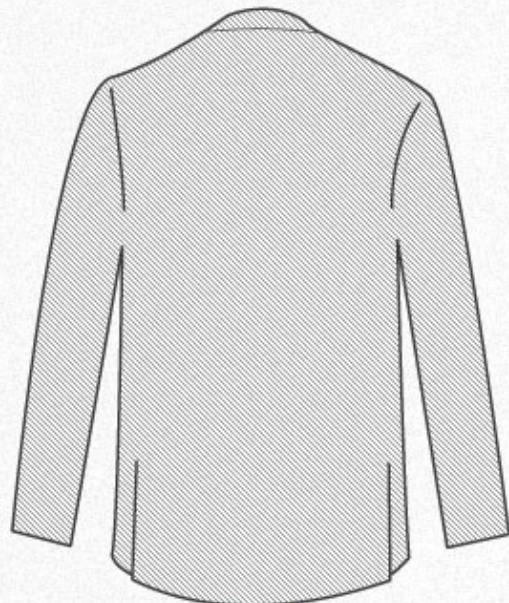


LOW ARMHOLES

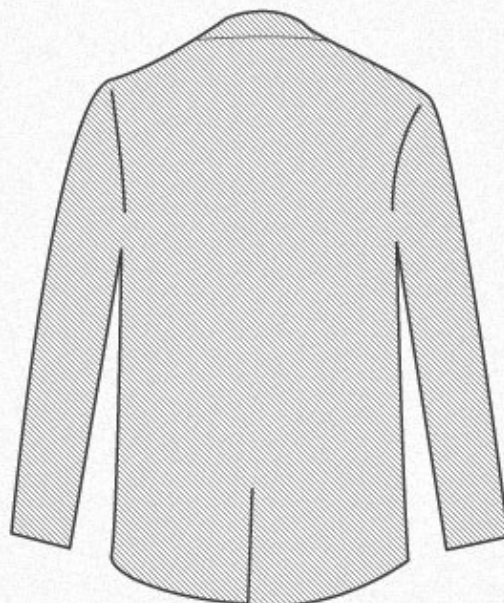


HIGH ARMHOLES 

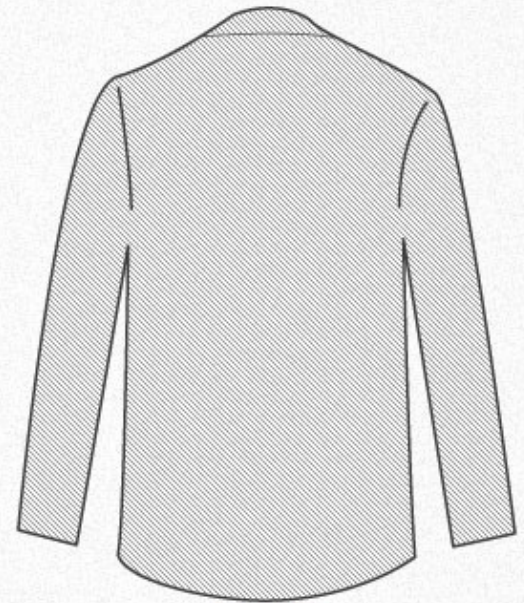
Vents



SIDE

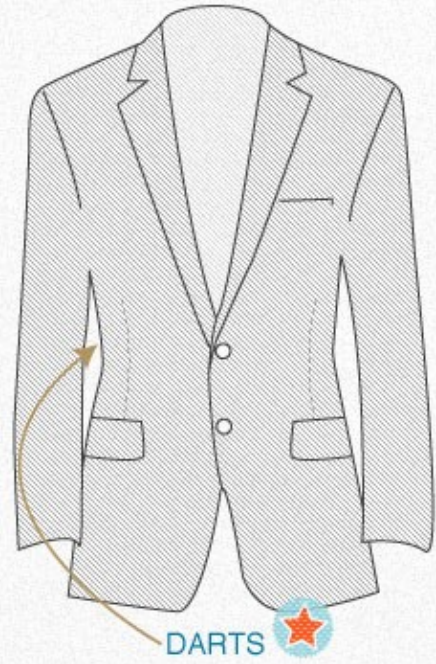


CENTER

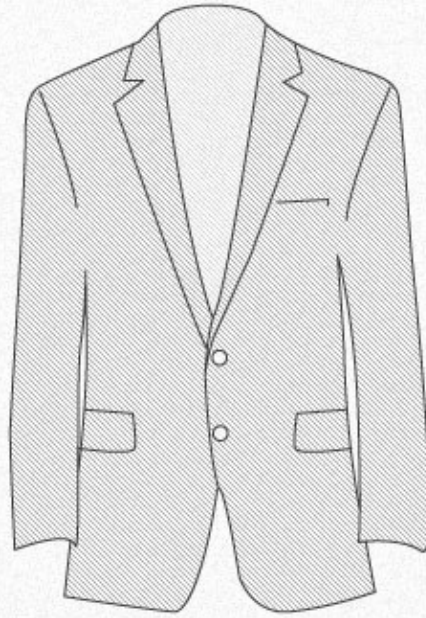


NONE

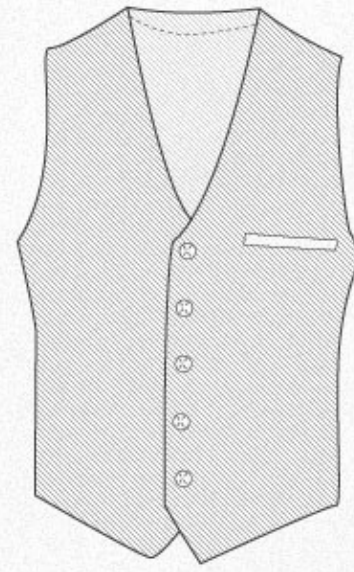
Darts & Vests



DARTS



NO DARTS



VESTS

A vest can have all the features of a suit jacket, various lapels, pockets, and buttons. A 5 button is common. The bottom button should always remain undone.

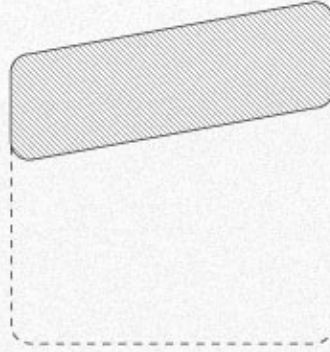
Pockets



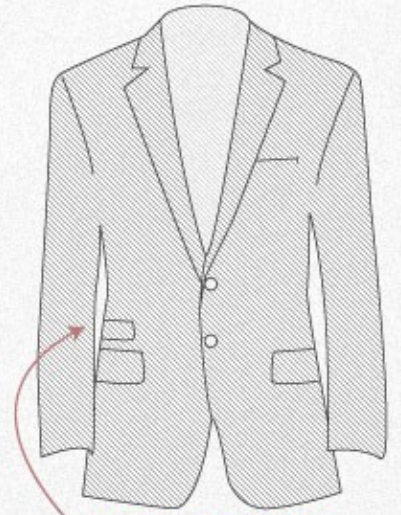
FLAP



PATCH

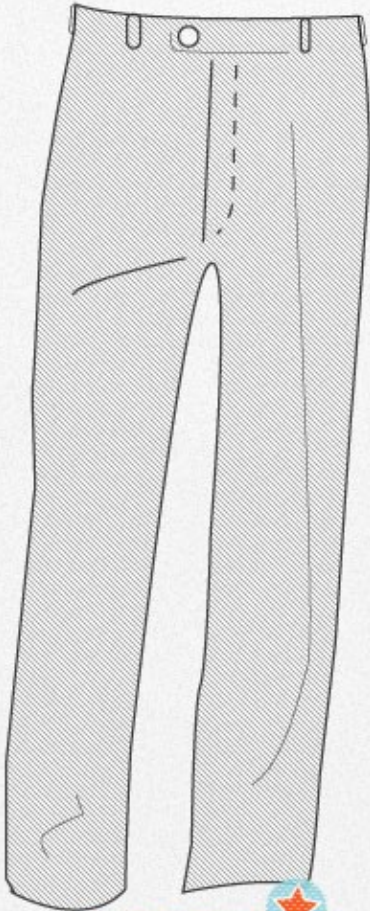


HACKING (SLANTED)

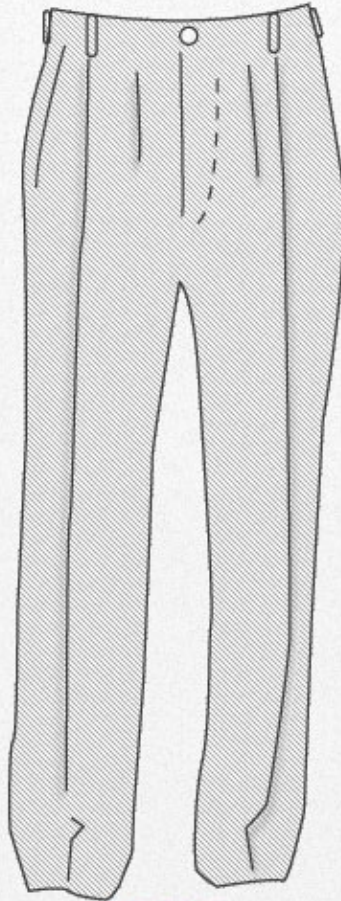


TICKET POCKET

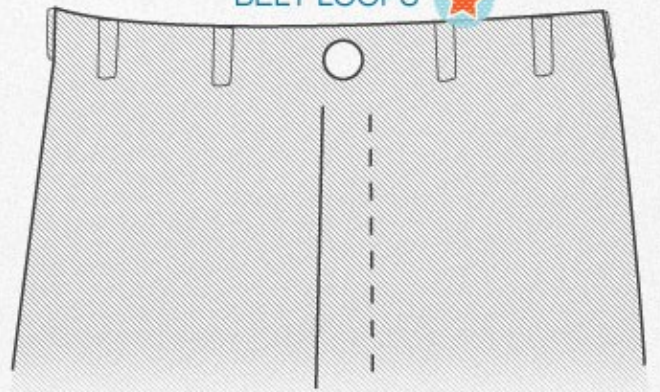
Pants



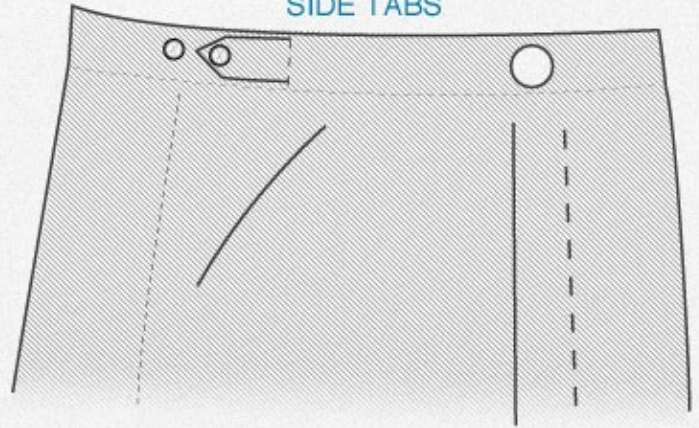
FLAT FRONT



PLEATS



BELT LOOPS



SIDE TABS

Material



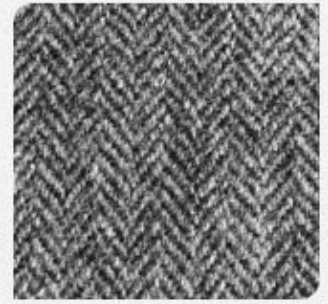
WOOL



COTTON



LINEN



TWEED

Color



GRAY



NAVY



TAN



BLACK

Pattern



PINSTRIPLE



CHALKSTRIPLE



GLEN PLAID



HERRINGBONE

Primer

www.primermagazine.com

Model No. 718
Young Men's Three-Button "No. 718" Double Style
Assure well-dressed, summer-comfort. Match lapels. Patch pockets. Patch back with ball ball on slacks (shown otherwise ordered).

Model No. 720
Young Men's Three-Button "No. 720" Double Style
Bright and popular for summer. Match lapels. Patch pockets. Ball on slacks (shown otherwise ordered).

Model No. 719
Young Men's Three-Button "No. 719" Double Style
Match lapels for summer-comfort. Patch pockets. Ball on slacks (shown otherwise ordered).

Model No. 721
Conventional Two-Button "No. 721" Double Style
Conventional summer comfort with good appearance. Match lapels. Patch pockets. Ball on slacks (shown otherwise ordered).

Model No. 717
Young Men's Double-Breasted Summer Style
Smart but weather model, two buttons in lapels, lower patch pockets. Ball ball back with soft pleats on slacks (shown otherwise ordered).

Sanforized-Shrunk

WASH SLACKS FOR SPORTS... FOR DRESS

Tropical Suiting
• Cool Sanforized-Shrunk Tropical Suiting... \$149
• Cool Sanforized-Shrunk Tropical Suiting... \$149

Part Wool Tropical
• Part Wool Sanforized-Shrunk Tropical Suiting... \$179
• Part Wool Sanforized-Shrunk Tropical Suiting... \$179

Nassau Tropical
• Nassau Sanforized-Shrunk Tropical Suiting... \$100
• Nassau Sanforized-Shrunk Tropical Suiting... \$100

Dressy Model
• Dressy Sanforized-Shrunk Model... \$119
• Dressy Sanforized-Shrunk Model... \$119

High-Style Pastels
• High-Style Sanforized-Shrunk Pastels... \$135
• High-Style Sanforized-Shrunk Pastels... \$135

Neat Summer Patterns
• Neat Sanforized-Shrunk Summer Patterns... 98c
• Neat Sanforized-Shrunk Summer Patterns... 98c

Sanforized-Shrunk
• Sanforized-Shrunk... \$109
• Sanforized-Shrunk... \$109

Inexpensive Model
• Inexpensive Sanforized-Shrunk Model... 85
• Inexpensive Sanforized-Shrunk Model... 85

THE College Shop

PRESENTS THE LATEST CAMPUS STYLES...

Smart \$1195

Popular \$1395

Glenside \$1295

Popular \$1295

Easy Terms
We deliver on credit or cash. See our Plan Payment Page 107.

Al Wool Large \$1235

Sizes of Suits on This Page
31 TO 36 INCH CHEST
36 TO 32 INCH WAIST
36 TO 33 INCH INSEAM

See Opposite Page for Descriptions

1930s Men's Suits

Source: <http://vintagedancer.com/1930s/1930s-men-fashion-guide/>



Source: <http://vintagedancer.com/1940s/1940s-mens-fashion/>